

SPRING CHANGE PROCEDURE

It is important when changing springs to do only one end of the camper at a time. Roof should be DOWN before repairing to take pressure off system.

1. REMOVE THE TIE PLATE BY REMOVING TWO [2] SELF-TAPPING SCREWS. REFER TO [K] ON ATTACHED SHEET.
2. REMOVE THE TWO [2] SCREWS THAT ATTACH THE SPRING TUBES TO THE MASTER TUBE. REFER TO [L] ON ATTACHED SHEET FOR LOCATION.
3. REMOVE TWO [2] SCREWS EACH FROM FLOOR PLATES THAT ATTACH SPRING TUBES, [N] ON ATTACHED SHEET, TO THE FRAME OF THE CAMPER.
4. PULL THE SPRING, [P] ON ATTACHED SHEET, OUT FROM THE BOTTOM OF THE TELESCOPING POSTS [A, B, C, ON ATTACHED SHEET].
5. PULL THE SPRING TUBE OFF OF THE SPRING.
6. PULL THE SPRING ASSEMBLY [2 SPRINGS ATTACHED] OUT OF THE MASTER TUBE, [L] ON ATTACHED SHEET.
7. PUT THE NEW SPRING ASSEMBLY IN THE MASTER TUBE AND PUSH ALL THE WAY TO THE STOP. *NOTE: THE CABLE LAYS BETWEEN THE SPRINGS AND MUST SLIDE FREELY.*
8. PUT THE SPRING TUBES ON THE SPRINGS. [YOU MAY PUT SOME OIL IN TUBE TO EASE PUSHING SPRING THROUGH.]
9. ATTACH THE SPRING TUBES TO THE CORNER OF THE FRAME OF THE CAMPER.
10. ATTACH THE SPRING TUBES TO THE MASTER TUBE.
11. ATTACH THE TIE BAR.
12. REPEAT THE ABOVE PROCEDURE ON THE OPPOSITE END OF THE CAMPER, IF NECESSARY.

TO REPLACE CABLE

1. START WITH REAR TUBES FIRST, FOLLOW INSTRUCTIONS, 1, 2, 3, 4, & 6 ABOVE WITH ROOF DOWN.
2. HOLD PAIR OF SPRINGS IN ONE HAND, LAY CRIMPED END OF CABLE AND PUSHER PLATE OVER END OF SPRINGS THEN INSERT SPRINGS AND CABLE INTO MASTER TUBE PUSHING THEM ALL THE WAY TO THE OPPOSITE END.
3. RUN CABLE AROUND PULLEY [M] AND INSERT END OF CABLE INTO MASTER TUBE BETWEEN THE TWO [2] SPRINGS AND FEED IT THRU TO THE FRONT. IF YOU ARE UNABLE TO FEED THRU, DUE TO GREASE IN MASTER TUBE, YOU WILL NEED TO DISCONNECT SPRING TUBES ON THE OTHER END MAYBE EVEN PULLING SPRINGS OUT OPPOSITE END TO ASSIST GETTING CABLE THRU.
4. PUSHER PLATE [see insert] IN MIDDLE OF CABLE MUST BE IN FRONT OF SPRINGS.
5. WRAP CABLE AROUND DRUM ON WHICH ONE TURN THEN PUSH END OF CABLE OUT SLOT ON SIDE OF WINCH HOUSING AND SECURE END UNDER CABLE KEEPER [I], TIGHTEN BOLT SECURELY [see T].
6. RE-ASSEMBLE LIFT TUBES TO CORNER OF FRAME, TO THE END OF MASTER TUBE AND RE-ASSEMBLE TIE PLATE.

System should be ready to use. You may put more grease in master tube.

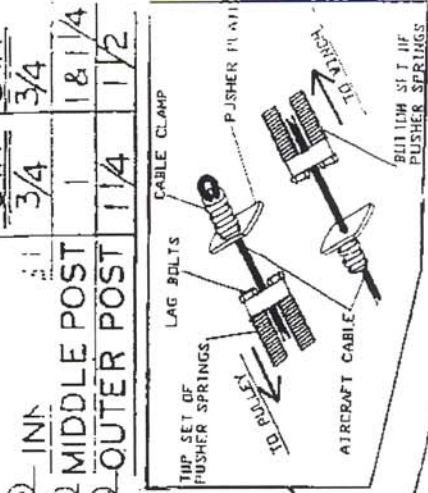
If front and back of roof do not start up at the same time you need to adjust pulley [M].

CRANK UP LIFT SYSTEM

I

ING POSTS

3	4
STA 3/4	STA 1 & 1/4
MIDDLE POST	OUTER POST
1 1/4	1 1/2



Roof Bracket with Bolt & Locknut

(S) Spring Tubes Front Door Side & Front Roadside

Grease Zerks on Front Bottom & Back Top of Master Tube

Master Tube Brackets (R)

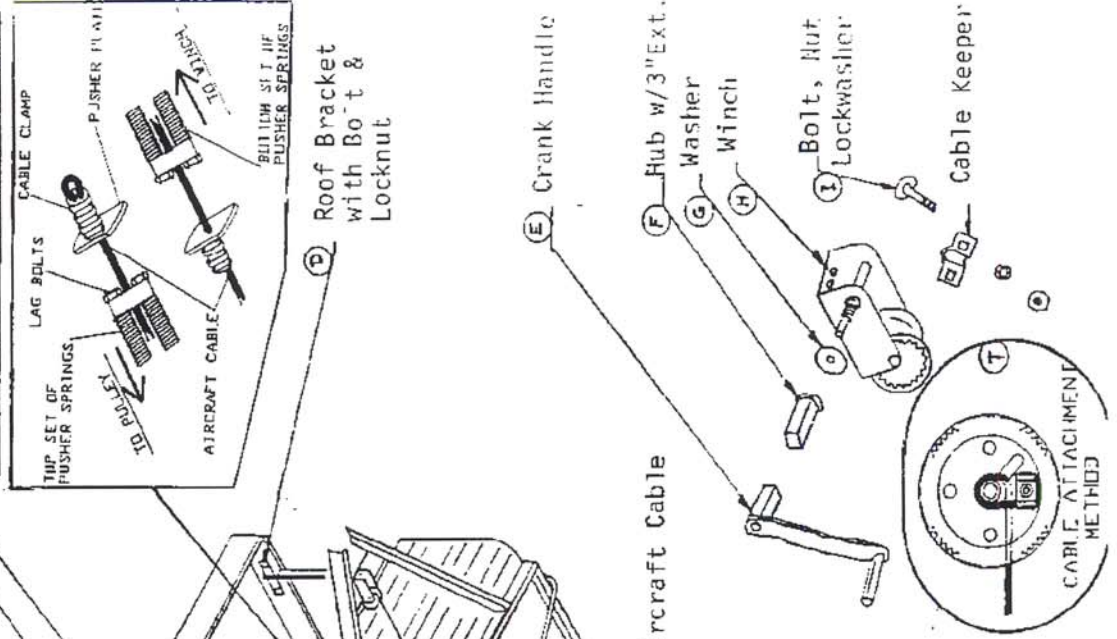
(C) Safety Post - User should Snap On Opposite Corner Posts When Top Is Up

(P) Spring Tube - Rear Door Side & Rear Roadside

(N) Adjustable Pulley (M)
Note: To Raise Front Of Roof Adjust Pulley Forward. To Raise Rear Adjust Pulley Back.

52" Master Tube For 3 Stage Post
55" Master Tube for 4 Stage Low Profile

(M) Adjustable Pulley (M)
Note: To Raise Front Of Roof Adjust Pulley Forward. To Raise Rear Adjust Pulley Back.



Aircraft Cable

Tie Bar